

# **HIGH TEMPERATURE CAMERA IDENTIFICATION SOFTWARE**

**Part of ES 4.0 and a key component towards  
Industry 4.0**

---

**GLASS SERVICE**

**Oldřich Liška, Erik Muijsenberg**

- GS Camera
- Furnace Measurement
- Tin Bath Measurement
- ES IV
- Data Acquisition Software
- Browser

# Glass Service Company Structure Worldwide

## HQ Vsetin, Czech Republic (total approx 100 employees)

**Glass Service USA**  
USA

**Glass Service B.V.**  
The Netherlands

**GS ACT**  
Slovakia

**GS Russia**  
Russia

**GS CHINA Ltd.**  
China

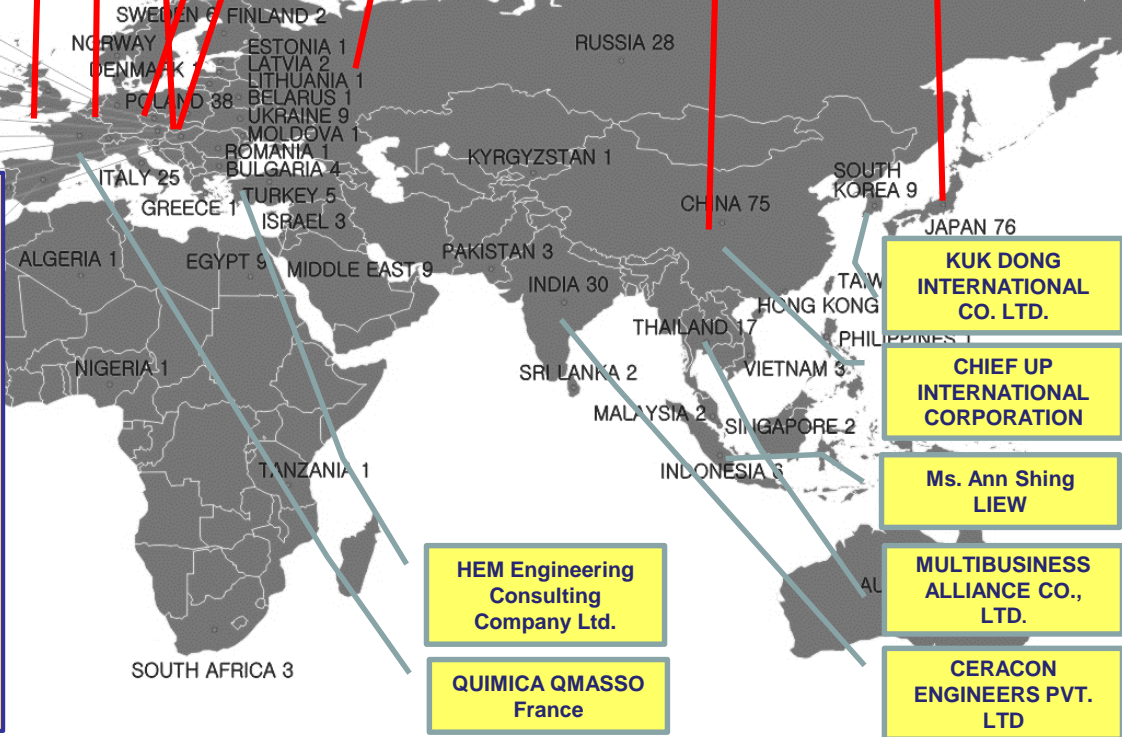


**CERAMIC FORUM**  
Japan

### Divisions of Glass Service Inc. :

- R&D
- GFM Furnace & Forehearth Simulation
- Glass Forming Simulation (GS ACT)
- Physical Modelling
- **Advance Furnace Control ESIII**
- Glass Defects Analysis
- Furnace data analysis & Inspections
- **Furnace Engineering** (spec. furnaces)
- Raw Materials Deliveries
- Burners (FlammaTec)
- Electric heating systems (F.I.C., UK)

**THERMOJET**  
Brasil



# WE OPTIMIZE YOUR INDIVIDUAL PRODUCTION CONDITIONS.

Advanced solutions for Glass Melting, Conditioning, Forming

more than  
**50'000**  
defects analyses

more than  
**650**  
furnace optimizations

more than  
**160**  
expert systems

## ASSESSMENT



### SIMULATIONS

3D advanced CFD simulation of the complete high temp. glass melting process for regenerator, melter, forehearth and forming.  
more



### LAB SERVICES

Quick identification of glass defects and their origin to support quality improvements and operating parameter optimization.  
more



### AUDITS & DATA ANALYSES

Analyzing production, observing critical conditions and identifying optimization potential.  
more



### EXPERT SYSTEM *ES III*™

Full automatic process control resulting in stable operations, improved yield, reduced production costs and emissions.  
more



### ENGINEERING

Turn-key design and supply of specialized furnaces with high quality demands (for lenses, LCD or crystal).  
more

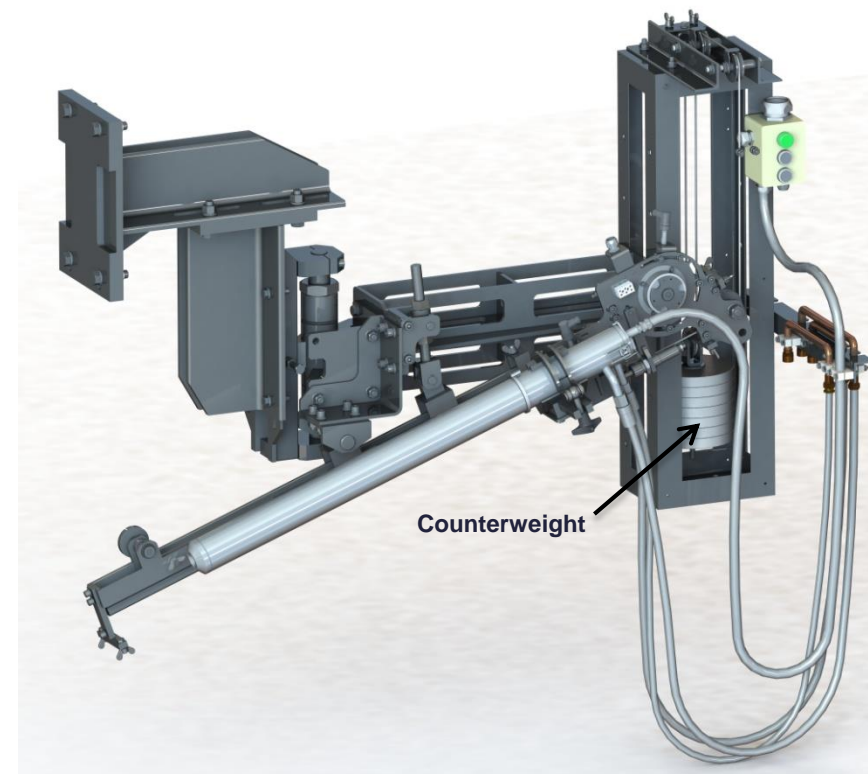
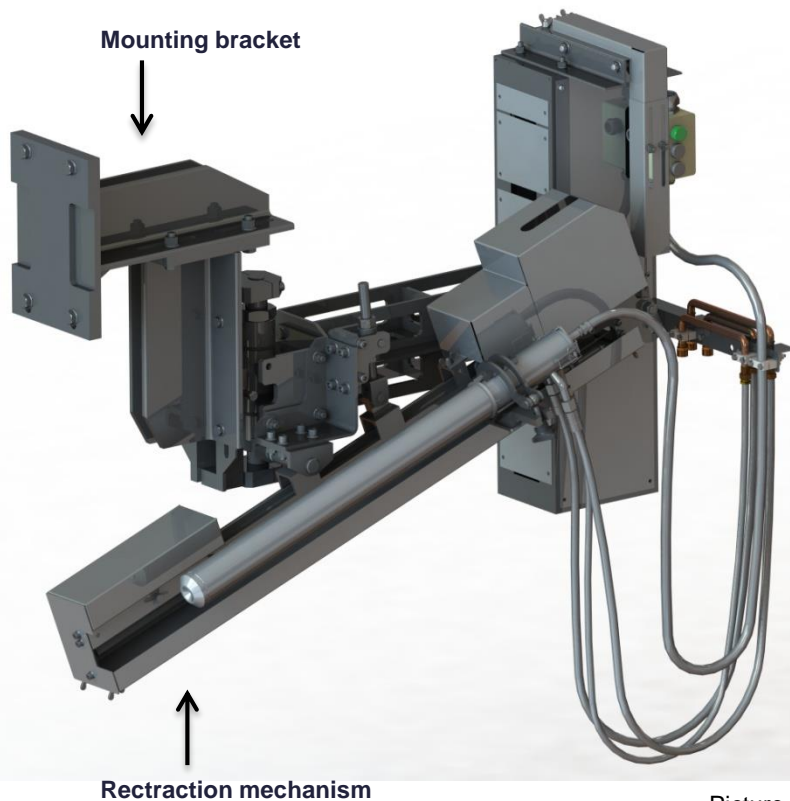


### RAW MATERIALS

Provide glass producers with Commodities, Specialties, Rare Earth Oxides and Polishing Compounds.  
more

- Present Trend of Industry 4.0 is motivating glass production for further automation of the glass melting process
- Part of the glass melting process such as the batch blanket spread in most furnaces and Glass Ribbon in Tin Float baths relies on operator visual regular inspection and his personal interpretation, followed by some decision making
- Even your TOP management understands that this cannot continue like this in the near future

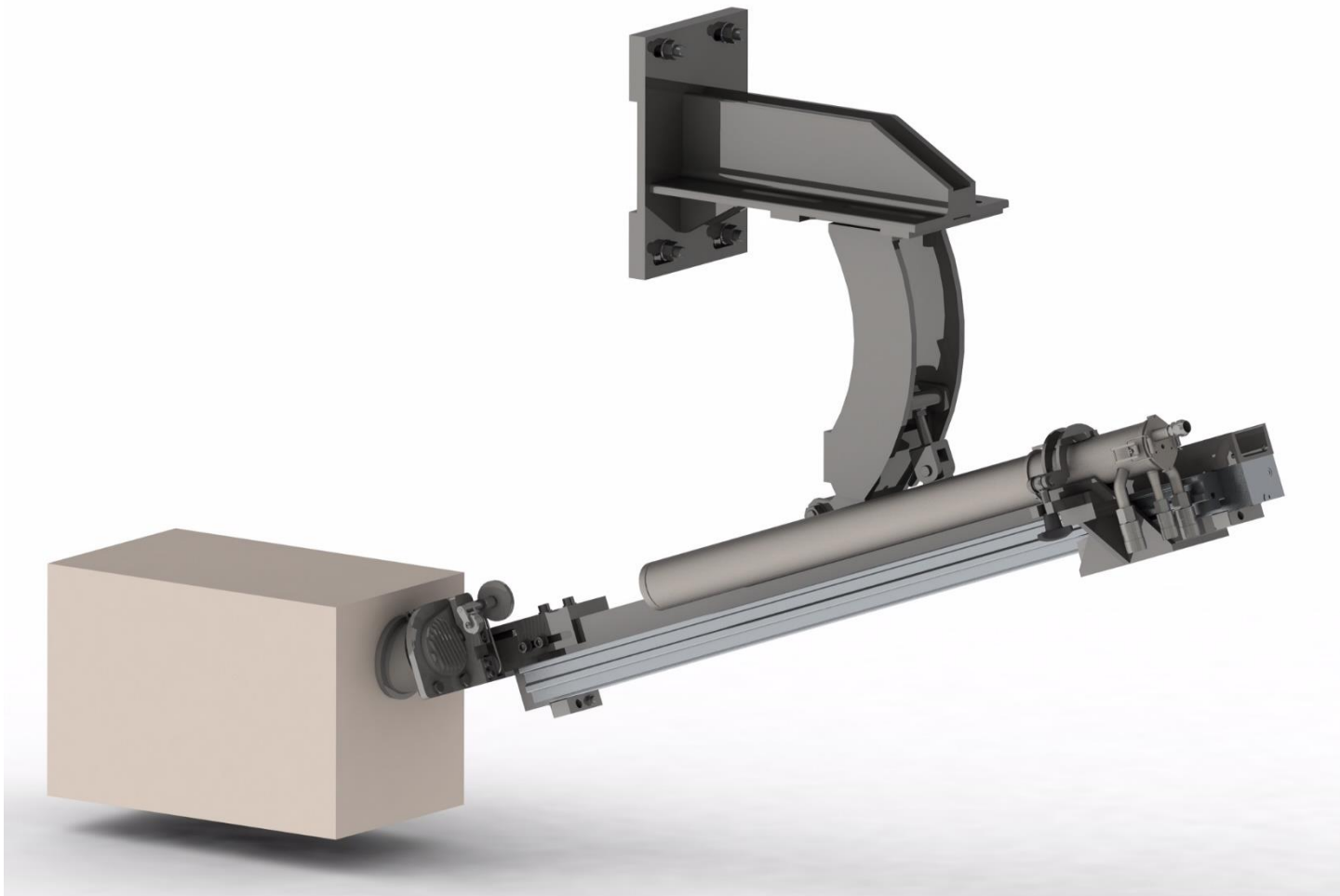
- IP camera – enhanced, high resolution and clear images
- Standard solution with retraction system for glass furnaces
- Standard solution for tin bath
- Motivation to our own camera software years ago



Picture 1: GS Furnace camera system



- Updated cam with electronic retraction system



Picture 1a: GS New Furnace camera system

- Monitoring
- Input to the ES IV

ES IV level



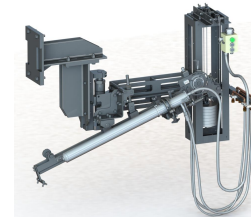
Operator level



PLC level



Process  
instrumentation  
level



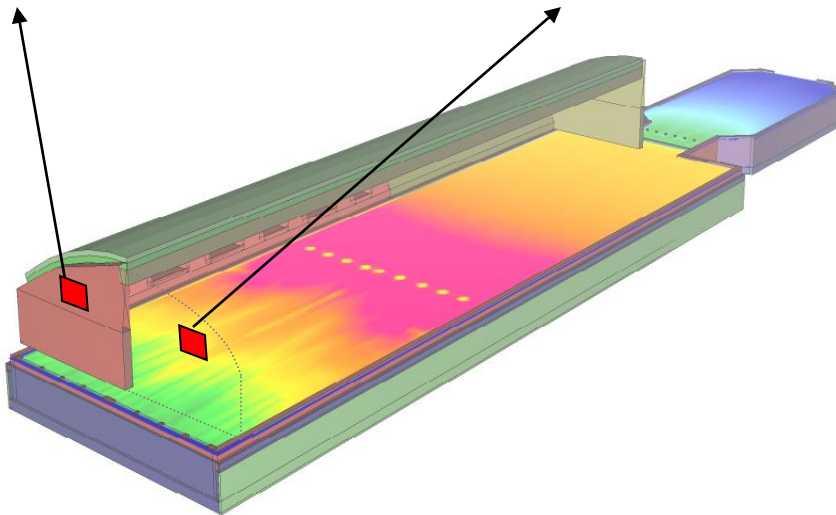
Picture 2: Camera in furnace process control



# ES III<sup>TM</sup> CAMERA - OVERVIEW



+

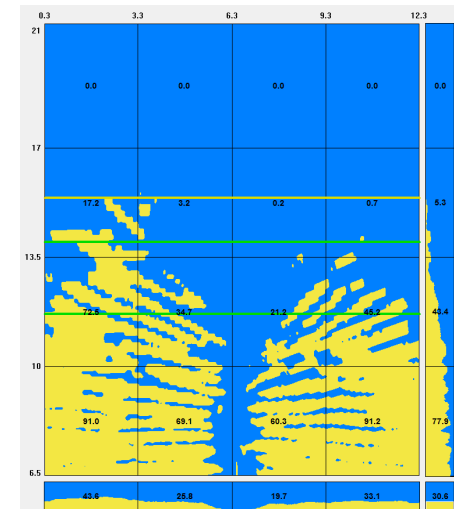
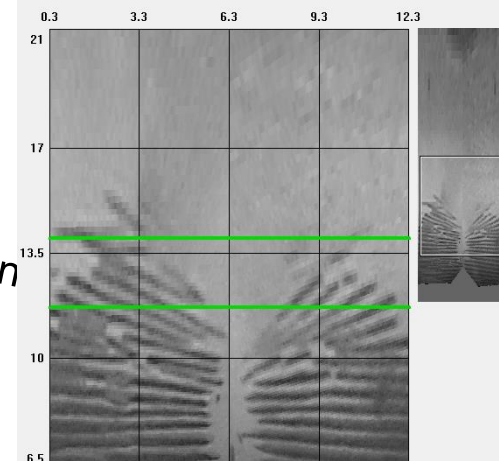


Correspondence  
between  
the real  
world  
and  
the images

Image  
processing

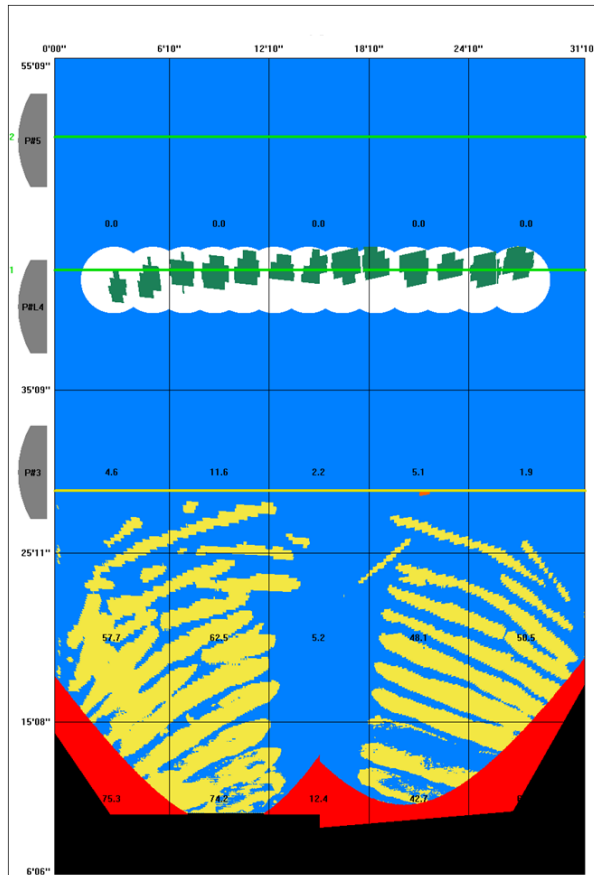
Measured data, statistics, analysis

## Projection

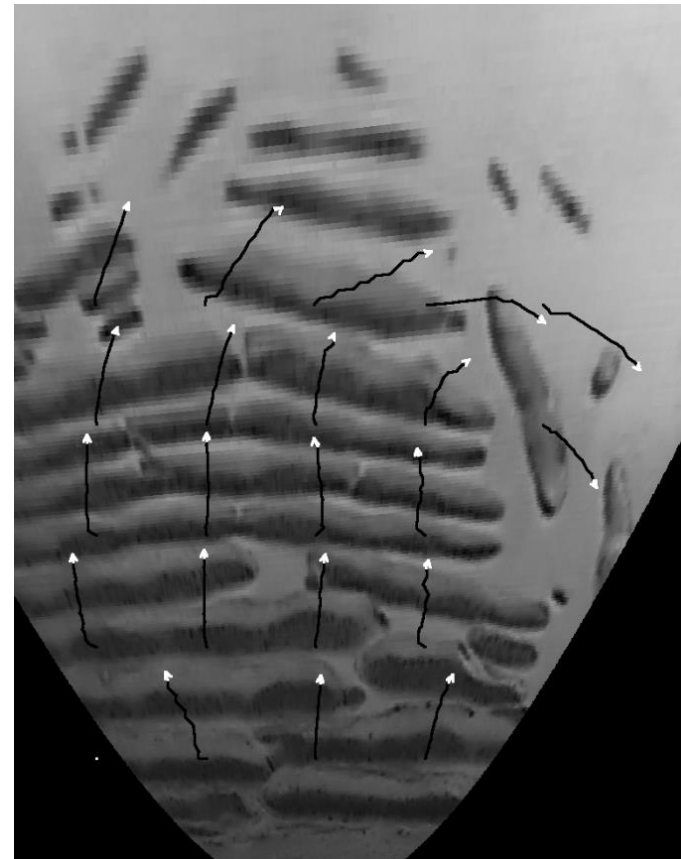




- Bubblers position and size detection
- Batch flow direction and velocity

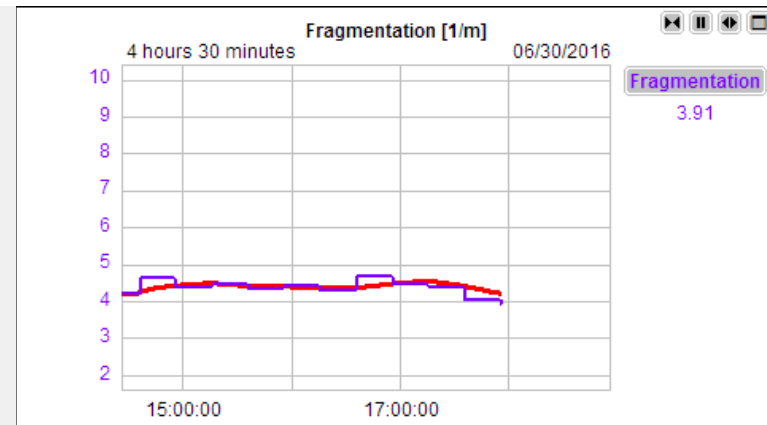
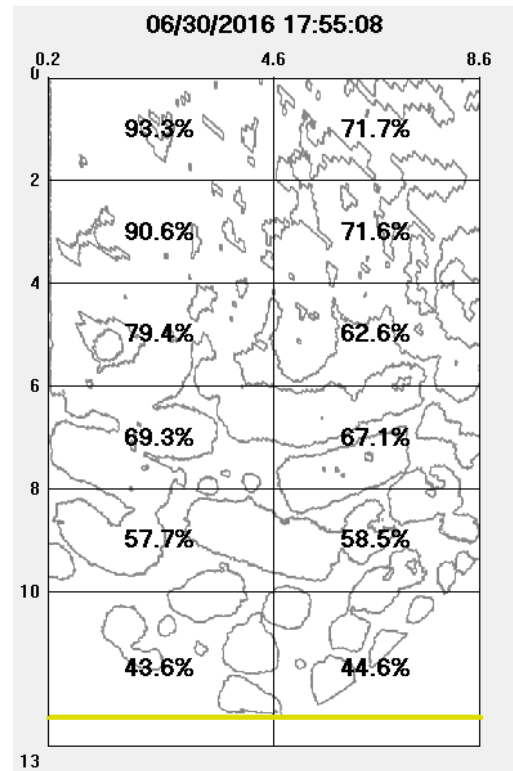
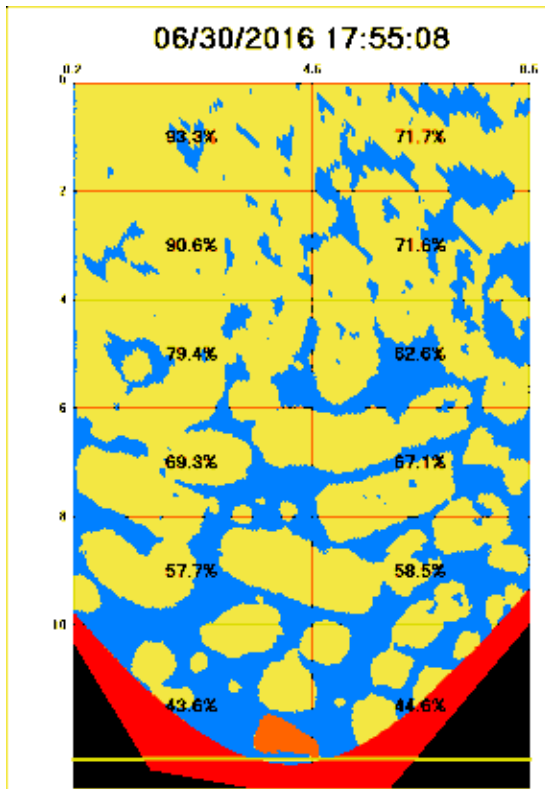


Picture 5: Bubblers measurement



Picture 6: Batch flow measurement

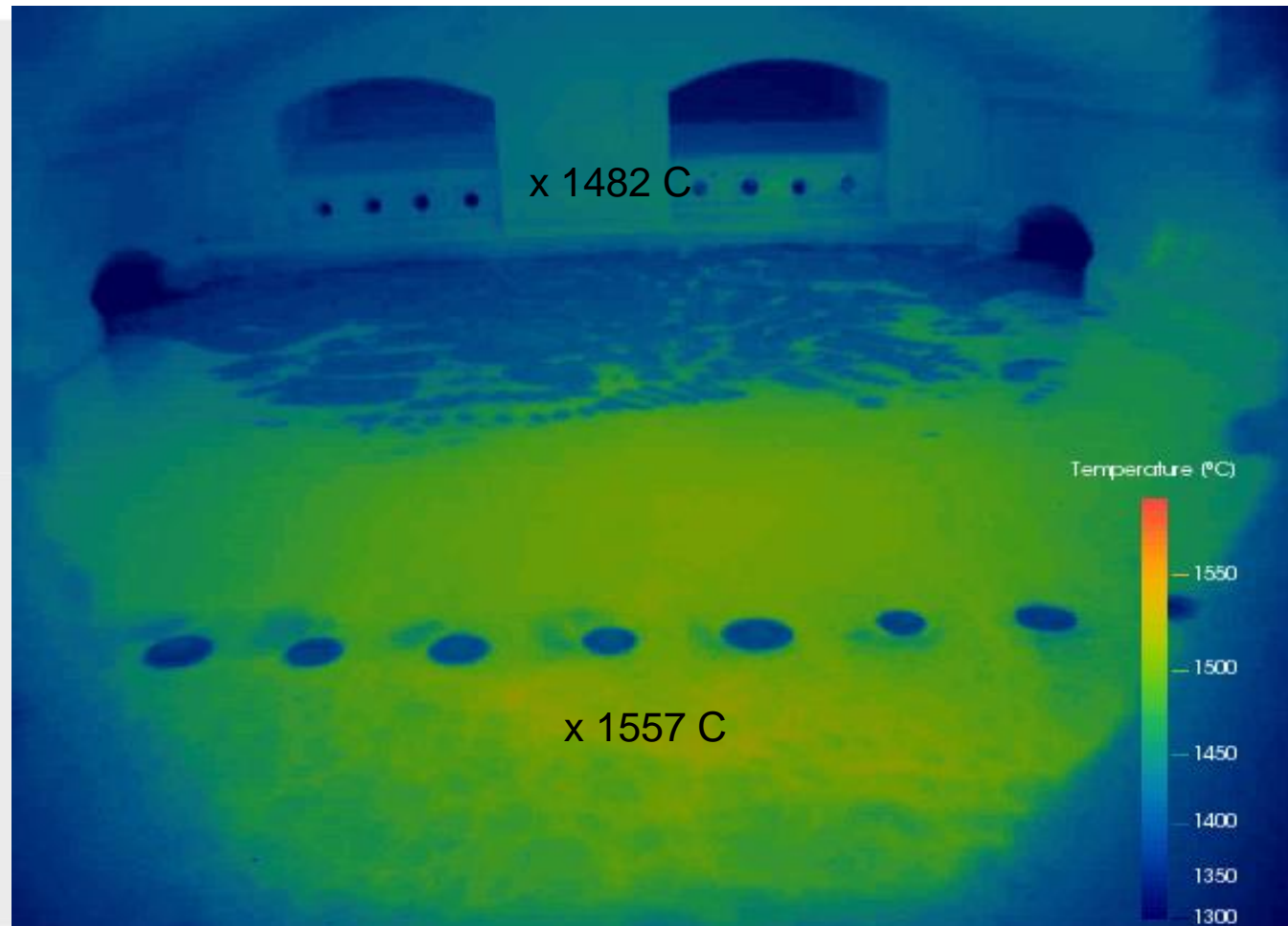
- Batch coverage / Batch periphery = Batch fragmentation



Picture 7: Container furnace measurement



- New GS Augmented-Sens camera provides 2 video streams: regular vision information plus calibrated temperatures using Infrared parallel





- Monitoring
- Input to the ES IV

ES IV level



Operator level



PLC level



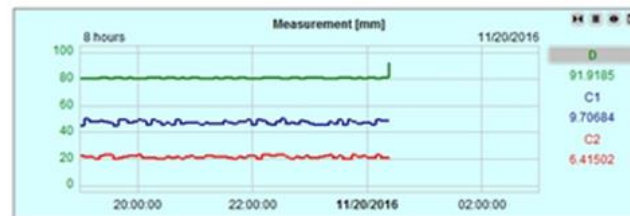
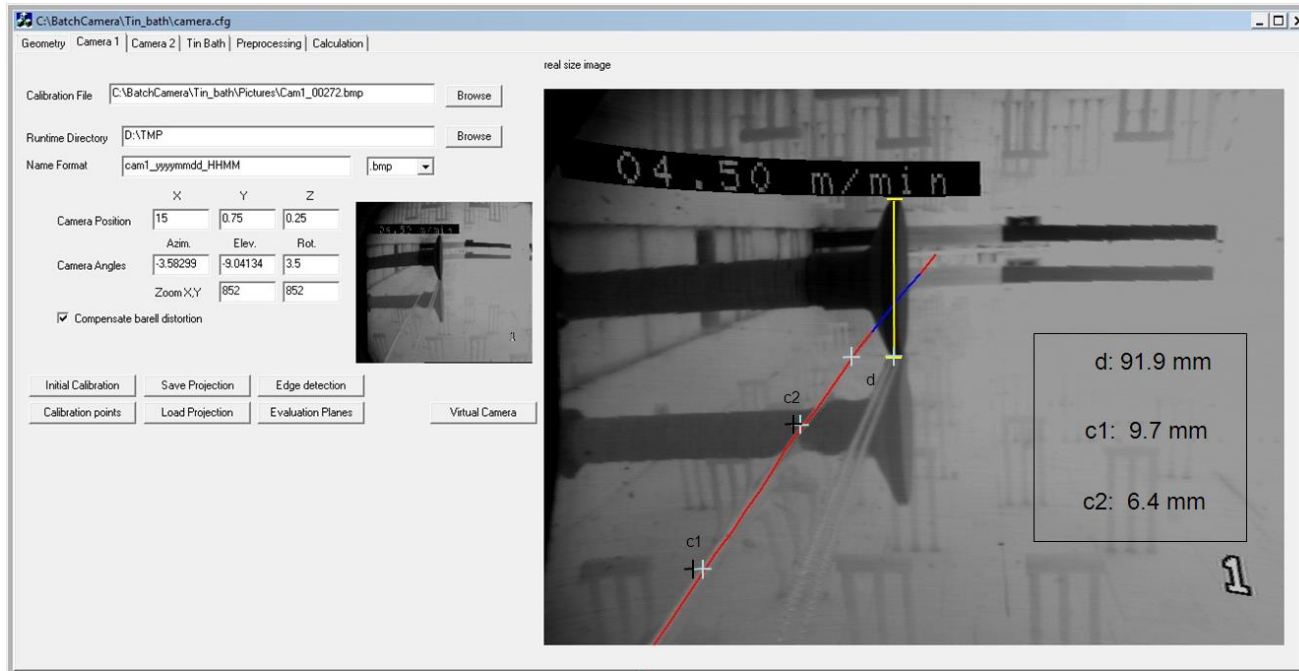
Process  
instrumentation  
level



Picture 8: Cameras in tin bath process control

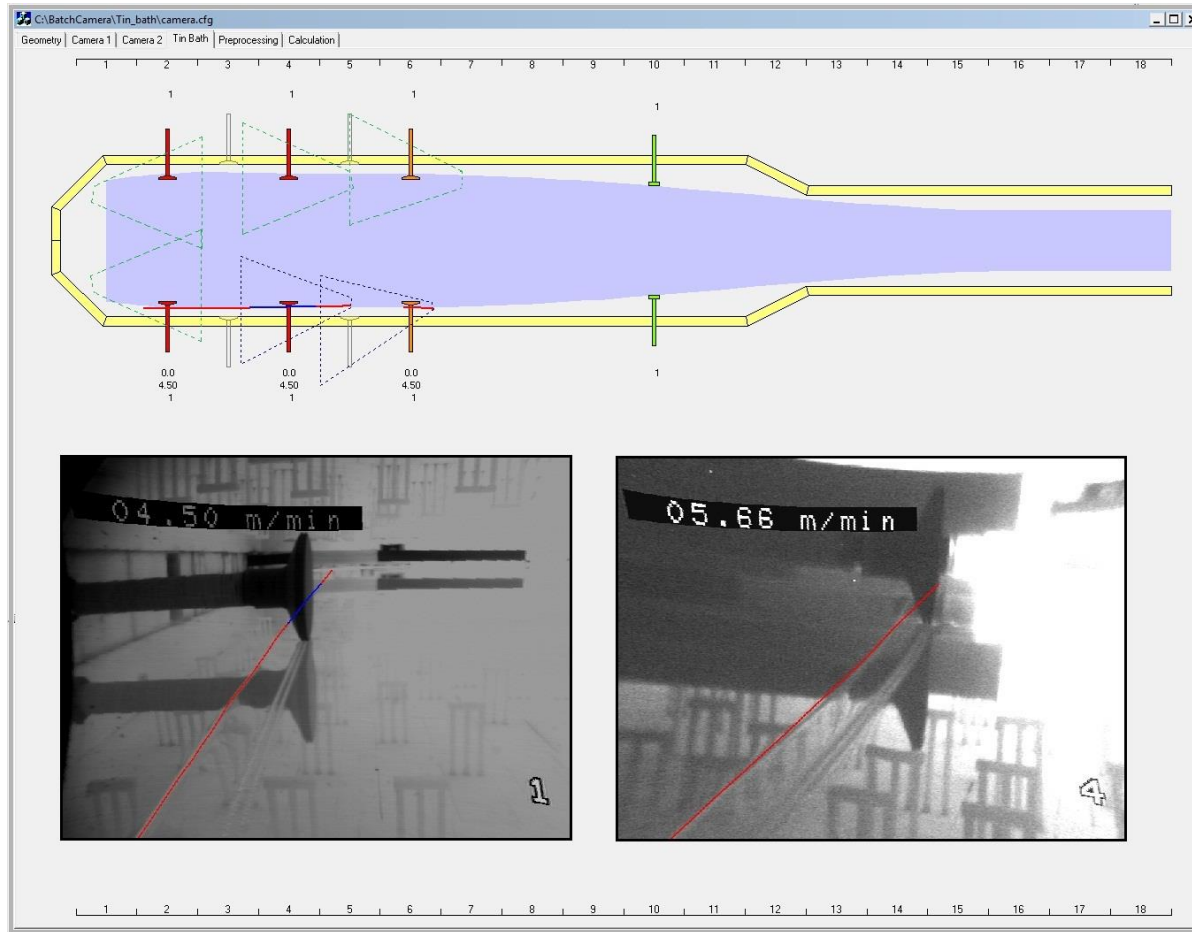


- Ribbon edge detection



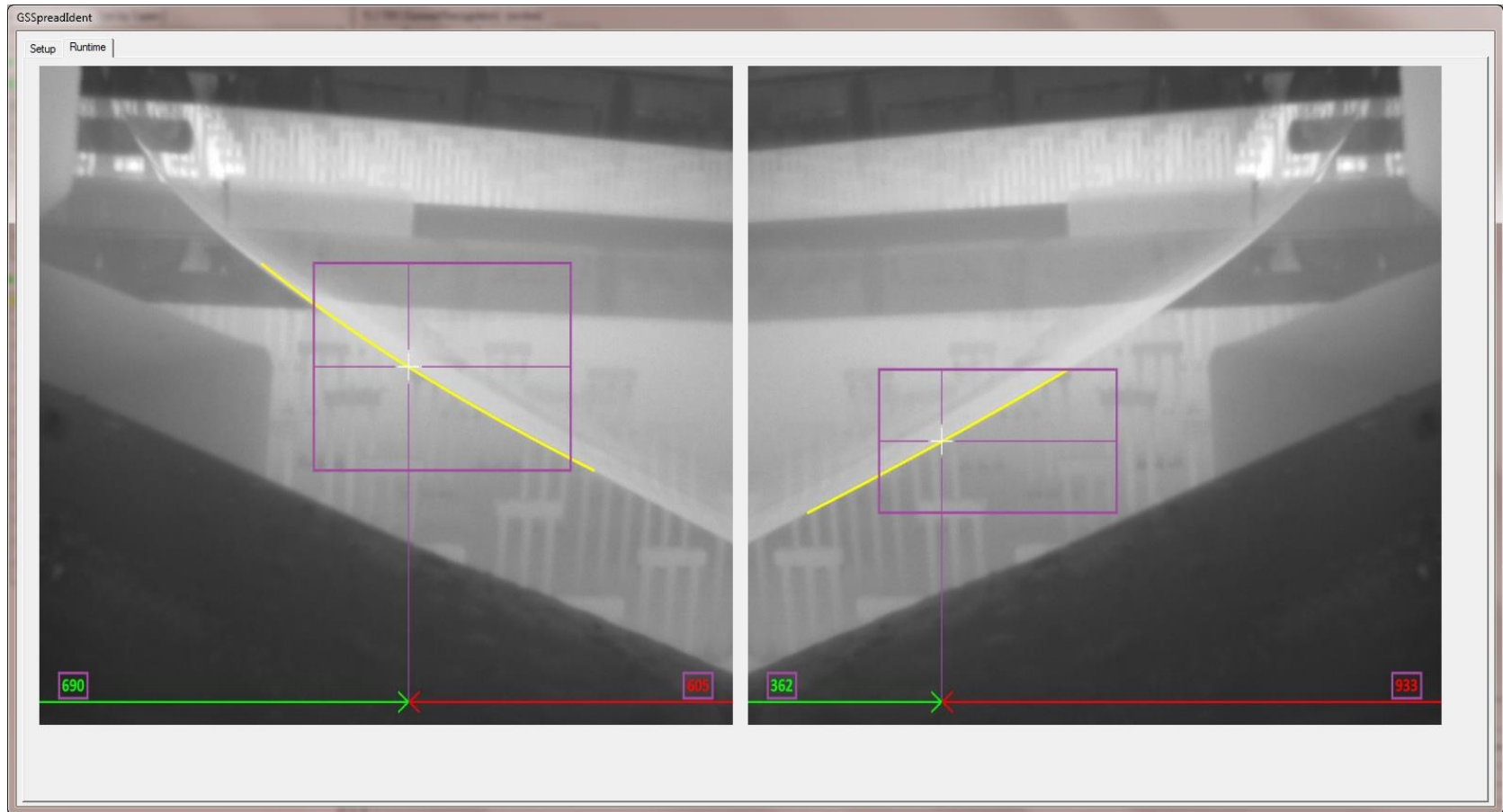
Picture 9: Ribbon edge detection

- Recreate Ribbon Top overview



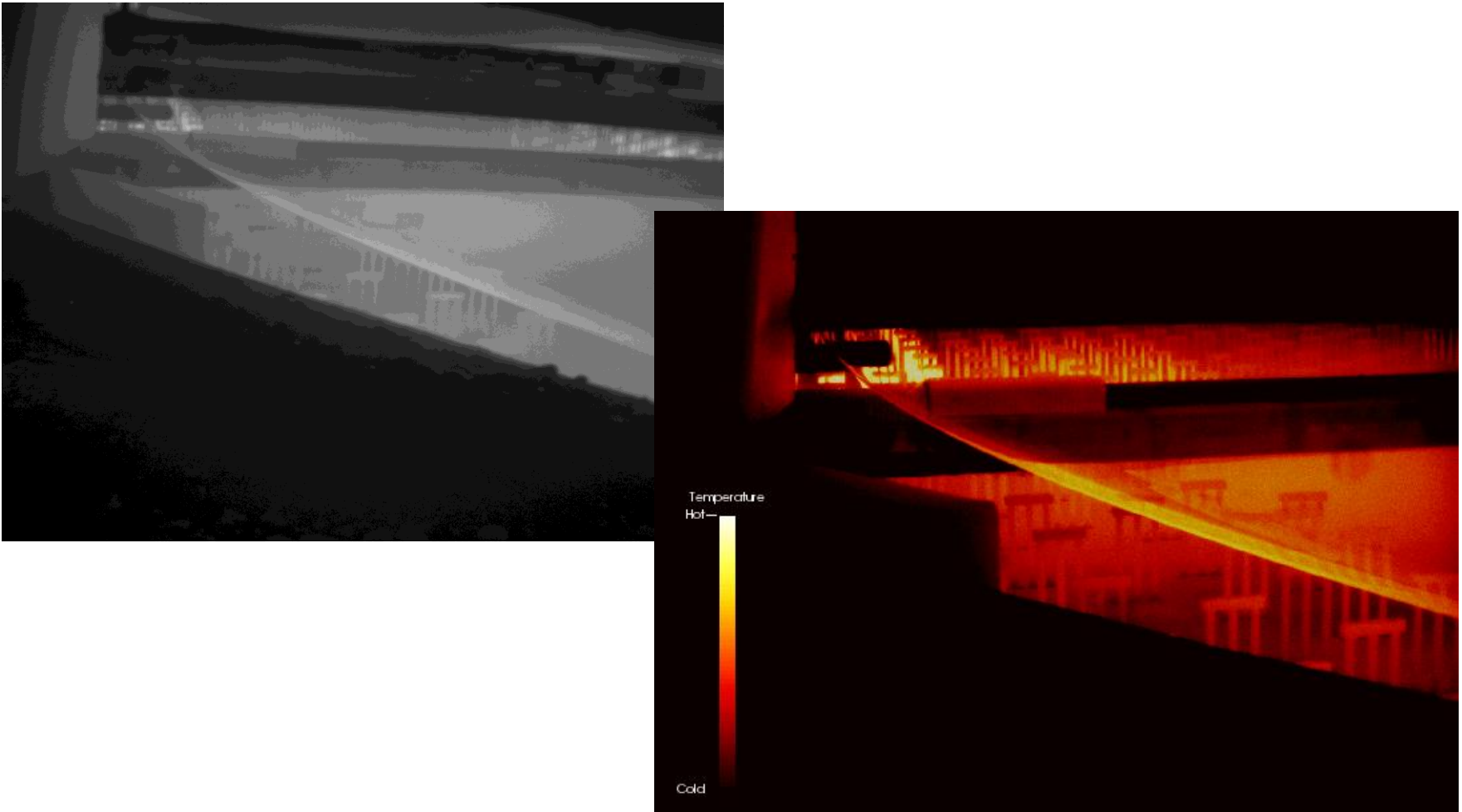
Picture 10: Ribbon overview

- Automatic Spread detection (and control)



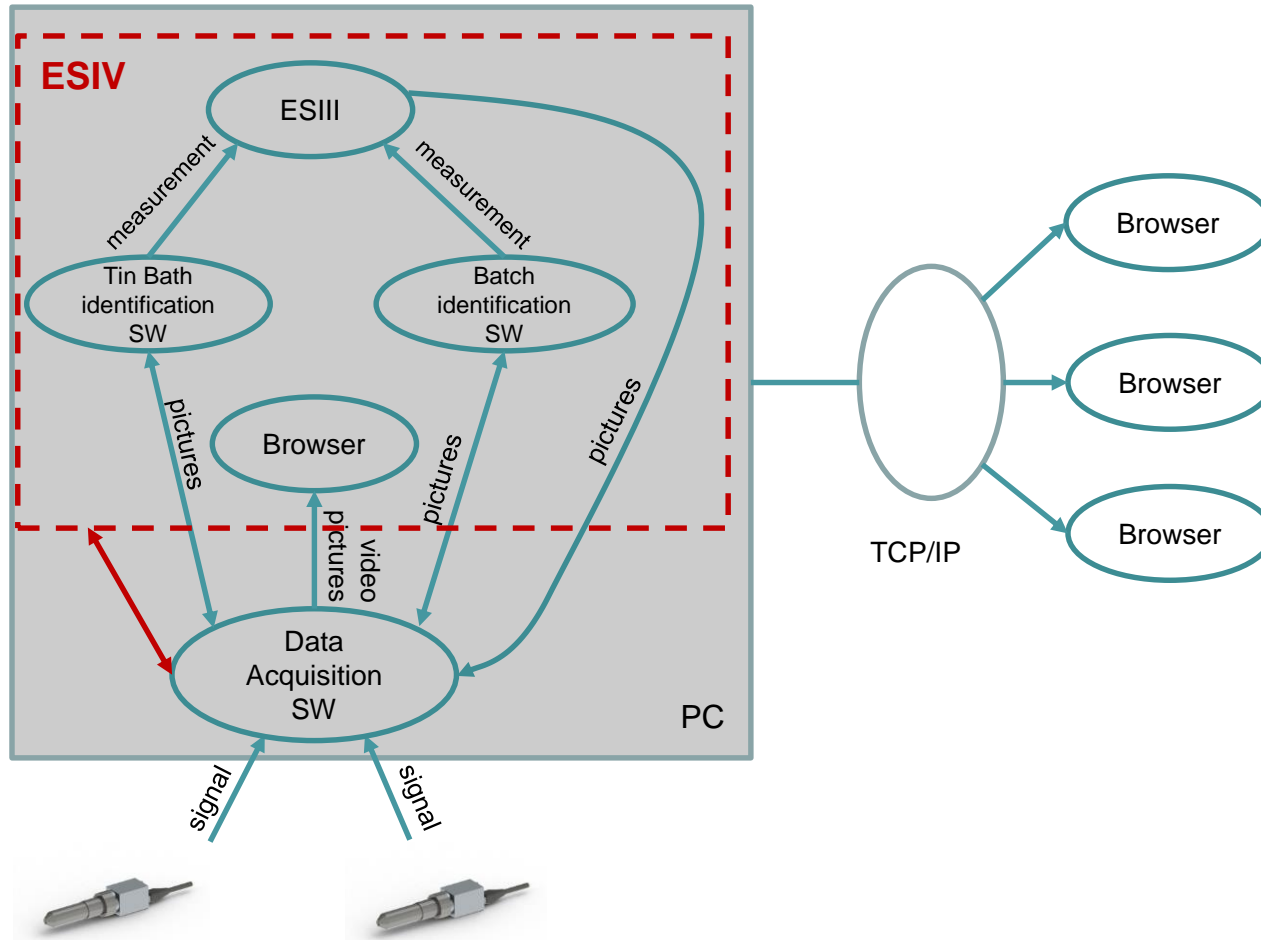
Picture 11: Spread detection

- Using IR camera for spread detection, improved detection



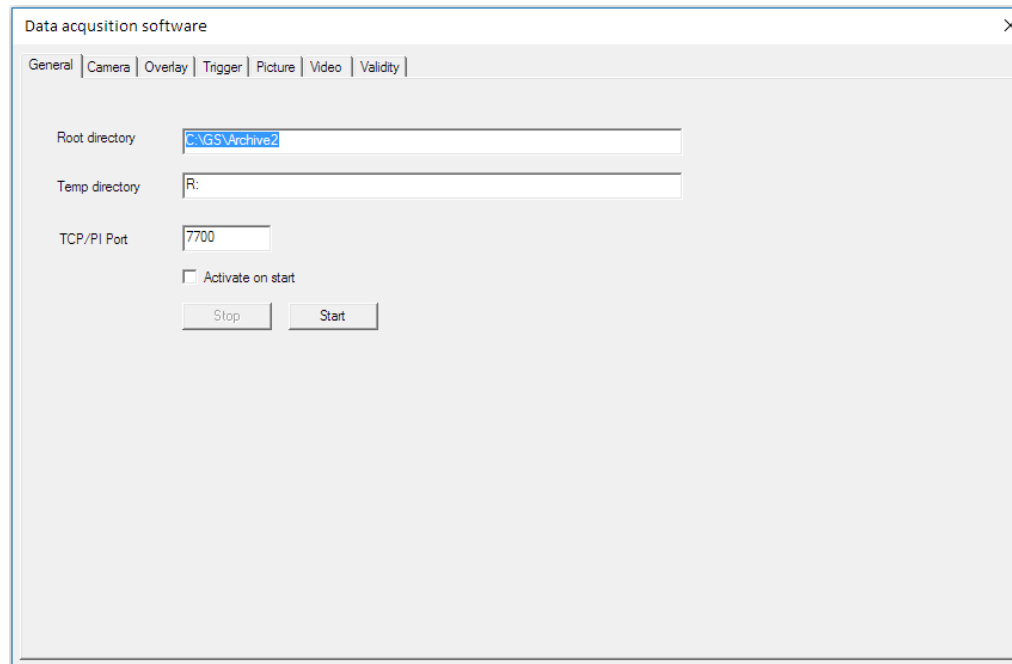
Picture 12: Ribbon Spread detection IR camera

- High temperature camera identification software integration into ES IV



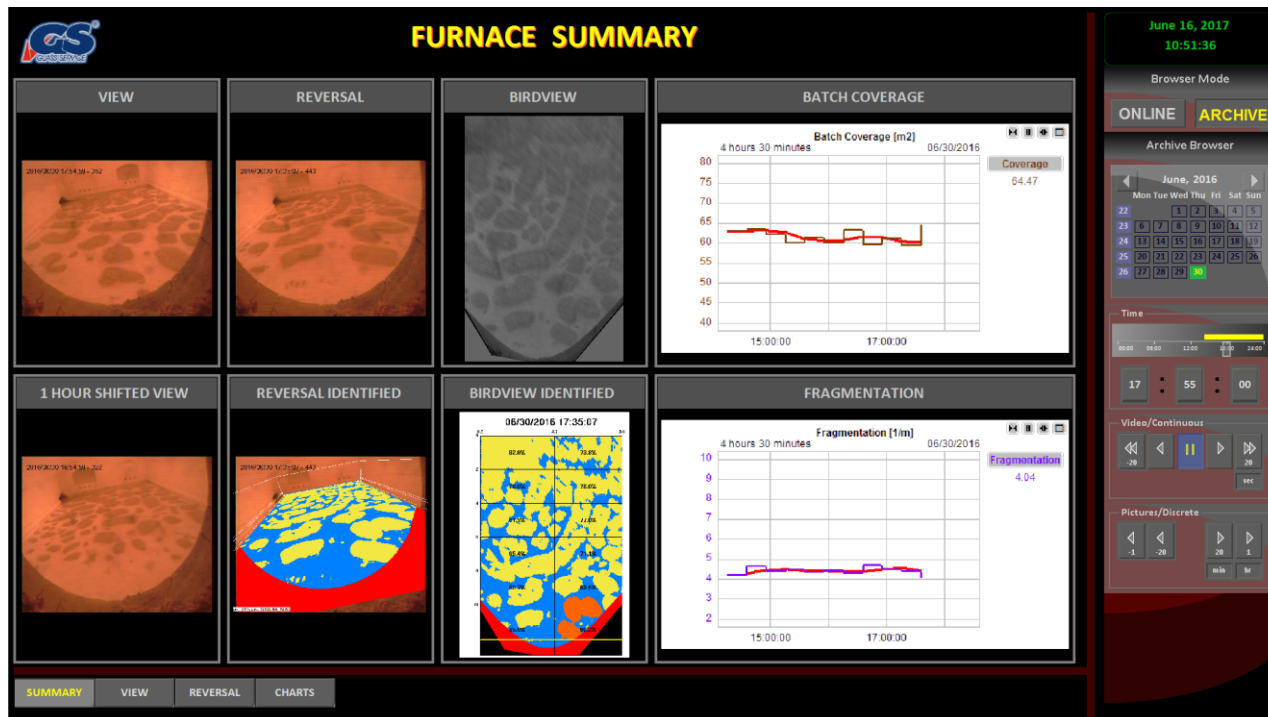
Picture 12: ES IV

- Separated TCP/IP server application
- Multiple camera inputs
- Collecting and storing pictures and videos
- Intelligent data archive manager
- Automatic flame identification



Picture 13: Data acquisition software

- TCP/IP client integrated in ES IV
- Might be used separately also
- Viewing and history browsing pictures and videos
- Fast playing forward and backward possibility
- Multiple monitors and screens can be defined



Picture 14: Browser



**THANK YOU FOR ATTENTION !**

**GLASS SERVICE, A.S.**  
**Rokytnice 60, 755 01 Vsetín**  
**Czech Republic**  
**T: +420 571 498 511**  
**F: +420 571 498 599**  
**oldrich.liska@gsl.cz**  
**[www.gsl.cz](http://www.gsl.cz)**